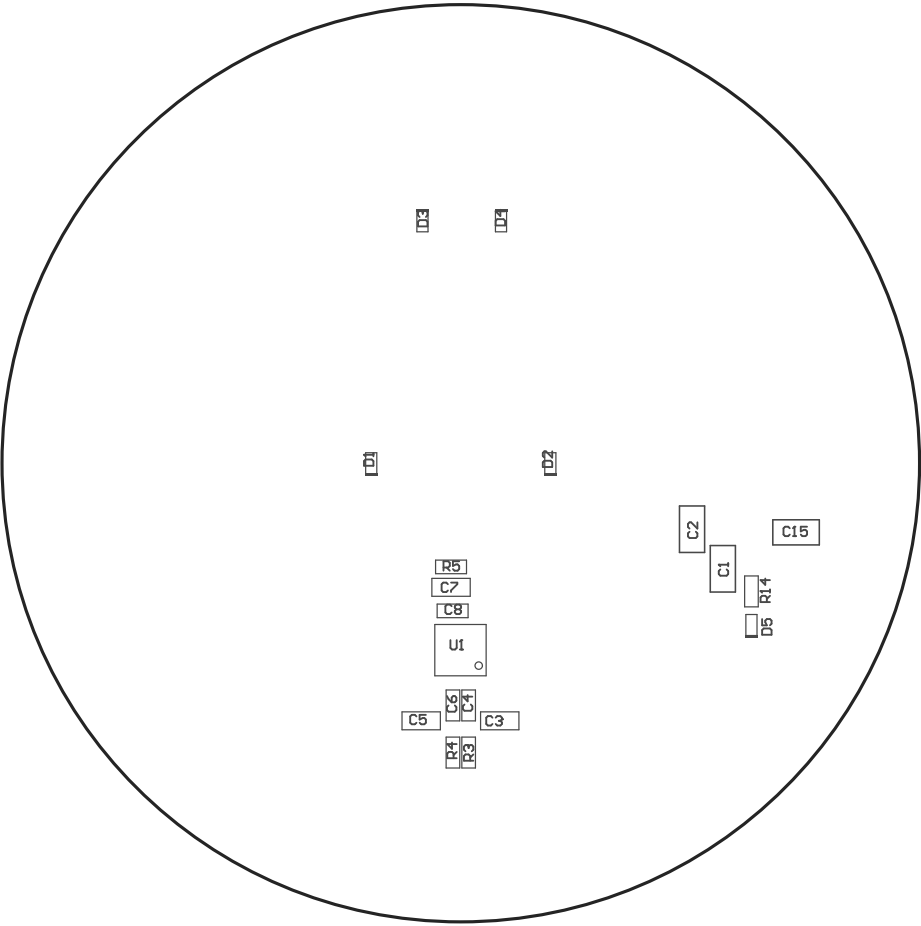
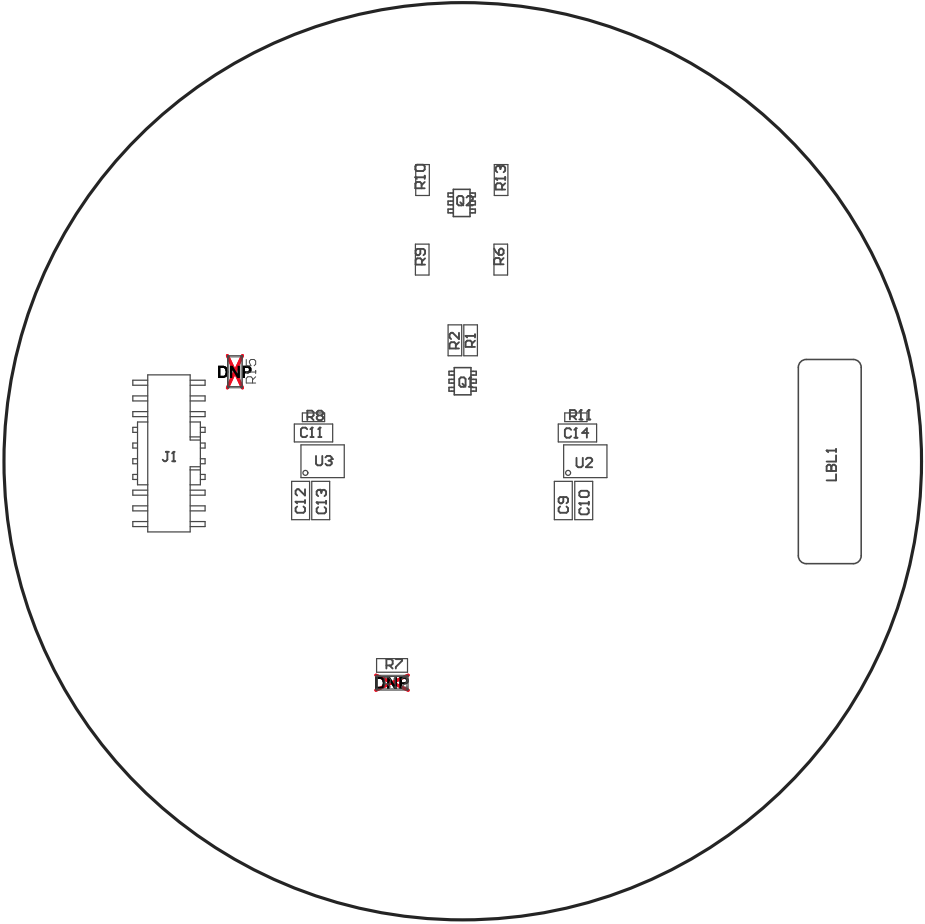


- Z21 ■ Install label in silkscreened box after final wash. Text shall be 8 pt font. Text shall be per the Label Table in the PDF schematic.
- Z22 ■ These assemblies are ESD sensitive, ESD precautions shall be observed.
- Z23 ■ These assemblies must be clean and free from flux and all contaminants. Use of no clean flux is not acceptable.
- Z24 ■ These assemblies must comply with workmanship standards IPC-A-610 Class 2, unless otherwise specified.



COMPONENTS MARKED 'DNP' SHOULD NOT BE POPULATED.  
ASSEMBLY VARIANT: 001

PCB VIEWED FROM TOP SIDE	BOARD #:	TIDA-01589	REV:	E2	SUN REV:	Not In VersionControl
M5 Assembly Top	TID #:	1589				
PLOT NAME = Top Assembly Drawing	GENERATED	:	10/16/2018	5:50:45 PM	TEXAS INSTRUMENTS	



COMPONENTS MARKED 'DNP' SHOULD NOT BE POPULATED.

ASSEMBLY VARIANT: 001

PCB VIEWED FROM BOTTOM SIDE	BOARD #: TIDA-01589	REV: E2	SUN REV: Not In VersionControl
M6 Assembly Bottom	TID #: 1589		
PLOT NAME = Bottom Assembly Drawing	GENERATED : 10/16/2018 5:50:46 PM		TEXAS INSTRUMENTS